



For more information on Xerox DocuColor 7000/8000 Digital Presses, call 1-800 ASK XEROX ext. 874, or visit us on the Web at [www.xerox.com](http://www.xerox.com).

## Xerox DocuColor 7000/8000 Digital Press Specifications

### Resolution

- 2400 x 2400 dpi (1-bit depth)
- Line Screens:
  - 150 Clustered Dot - 300 Clustered Dot
  - 200 Clustered Dot - 600 Clustered Dot
  - 200 Rotated Line Screen - Stochastic

### New Technology

- Customizable Aligner Adjustments
- Custom Paper Setup
- Fully Digital Screens
- Charge Corotron Cleaning Assembly
- New Imaging System
- Enhanced Feeding
- Improved Front-to-Back Registration
- Customer Services Platform™

### 7000 Productivity/Print Speeds

- 70 ppm (A4, 8.5" x 11") 60 – 135 g/m<sup>2</sup> (16 lb. Bond to 90 lb. Text)
- 50 ppm (A4, 8.5" x 11") 136 – 220 g/m<sup>2</sup> (90 lb. Text to 80 lb. Cover)
- 35 ppm (A4, 8.5" x 11") 221 – 300 g/m<sup>2</sup> (80 lb. Cover to 110 lb. Cover)
- Up to 4200 full process color A4 (letter) 4/0 impressions per hour
- Up to 2100 A3 (tabloid) 4/0 impressions per hour

### 8000 Productivity/Print Speeds

- 80 ppm (A4, 8.5" x 11") 60 – 135 g/m<sup>2</sup> (16 lb. Bond to 90 lb. Text)
- 60 ppm (A4, 8.5" x 11") 136 – 220 g/m<sup>2</sup> (90 lb. Text to 80 lb. Cover)
- 40 ppm (A4, 8.5" x 11") 221 – 300 g/m<sup>2</sup> (80 lb. Cover to 110 lb. Cover)
- Up to 4800 full process color A4 (letter) 4/0 impressions per hour
- Up to 2400 A3 (tabloid) 4/0 impressions per hour

### Paper Format/Sizes

- Maximum Sheet Size 12.6" x 19.2" (320 x 488 mm)
- Minimum Sheet Size 7.2" x 7.2" (182 x 182 mm)
- Maximum Imageable Area 12.4" x 18.9" (315 x 480 mm)

### Paper Flexibility/Weights

- Coated (gloss, matte, dull, silk); uncoated; specialty stocks: recycled, perforated, cut tabs, transparencies, labels, Xerox DocuCard®, synthetics, Xerox Premium Digital Carbonless Paper
- Mixed-stock jobs supported
- 16 lb. Bond/60 g/m<sup>2</sup> up to 110 lb. Cover/300 g/m<sup>2</sup>

### Paper Capacity and Handling

- Trays 1 and 2—2000 sheets each 7.2" x 7.2" (182 x 182 mm) to 12.6" x 19.2" (320 x 488 mm), 16 lb. Bond/45 lb. Text to 110 lb. Cover (60 to 300 g/m<sup>2</sup>) *Note: Tray capacity is based on 24 lb. (90 g/m<sup>2</sup>) substrate*
- Automatic Tray Switching
- Offsetting Output Tray
  - 500 sheets with automatic offsetting sets
- Duplex
  - Automatic duplexing (4/4 impressions) from all trays up to 220 g/m<sup>2</sup>

### Options

- 4,000-sheet Secondary Feeder Module
- 3,750-sheet High Capacity Stacker 80 (HCS80)
- 2,250-sheet High Capacity Stacker Stapler 80 (HCSS80)
- Xerox FreeFlow™ Scanner 665
- Xerox Productivity Plus

### Choice of Color Servers

- Xerox DSP8000
- EFI EXP8000
- Creo CXP8000

### Electrical

- Base Configuration: 200-240 VAC, 50/60 Hz, 30A (sole use)
- Additional electrical required for Color Server and Feeding/Finishing devices
  - 115 VAC 15 Amp for 60Hz or 220 VAC 10 Amp for 50 Hz (Western Hemisphere)
  - 200 – 240 Volts, 10 Amp, 50 Hz (Europe)

### Size

- Base Printing System (without RIP and/or feeding/finishing devices)
  - 100" (W) x 44" (L) x 56" (H)
  - 2540 mm (W) x 1105 mm (L) x 1413 mm (H)
  - Weight: 2200 lbs. (1000 kg)

**A comprehensive approach to printing systems**—From the earliest days of Xerox digital printing, we've taken a comprehensive approach to meeting your total printing needs. Beginning with your first contact with a Xerox representative and culminating with unmatched service, support, and supplies, we view your total printing needs and answer them with global solutions.



Xerox FreeFlow is a roadmap to success in digital printing, built on open architectures and standards that allow integration into your existing workflow. We bring together the industry's most comprehensive collection of Xerox and partner workflow solutions—beginning with our RIP choices delivering to you more flexibility and value.

# XEROX®

Technology | Document Management | Consulting Services

Xerox DocuColor® 7000/8000 Digital Presses

Overview



in tune  
with tomorrow

Xerox DocuColor 7000/8000



# Performance that's music to your eyes.

Are you ready for digital color presses that are in sync with today's fast-paced, rapidly changing world of digital printing?

With the new DocuColor 7000/8000 Digital Presses, you're ready for whatever challenge comes along.

Our latest digital printing solutions will enable you to succeed by handling ever faster turnarounds. Ever tighter margins.

Complex mixed-media and variable-information jobs. Larger and smaller print runs.

The DocuColor 7000/8000 Digital Presses have the kind of sophisticated features you need to be more productive and more profitable, enabling you to capitalize on an expanding list of digital printing opportunities for years to come.



## A starring cast in supporting roles.

For optimum productivity and profitability, DocuColor 7000/8000 Digital Presses are backed by the kind of industry-leading service and support you'd expect from Xerox.



Like all Xerox products, DocuColor 7000/8000 Digital Presses are covered by our unmatched Total Satisfaction Guarantee as well as a number of innovative service programs and tools.

Take our Productivity Plus Integrated Maintenance Program (where available). It gives you unprecedented control over the image quality and reliability of DocuColor 7000/8000 Digital Presses. User-friendly diagnostic routines make sure every sheet meets your high standards. Xerox Productivity Plus also reduces service calls, and gives you more hours of uptime.

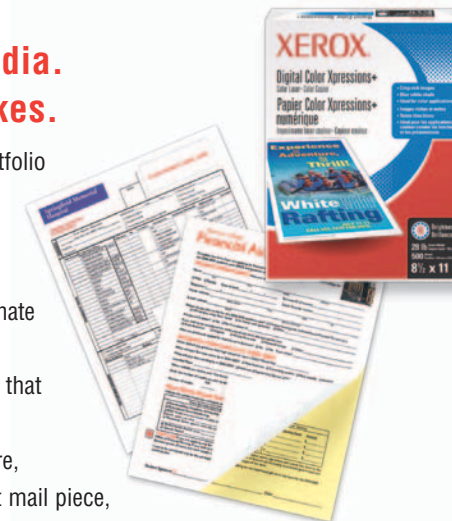
Add to that a 24-hour hotline and expert analyst support, and you have what it takes to keep your entire digital printing operation running at peak levels.

## Xerox Paper and Specialty Media. See the difference quality makes.

Xerox is committed to bringing you the widest portfolio of Digitally Optimized Paper and Specialty Media, perfectly paired with our technology, to improve your document quality and bottom line. All Xerox paper and specialty media are precision cut to eliminate the hidden cost of dust contamination, registration problems, finishing issues, and poor image quality that result in increased machine maintenance and lost productivity. Whether you need to create a brochure, membership card, promotional signage, or a direct mail piece, Xerox paper and specialty media are the best choices for printing with DocuColor 7000/8000 Digital Presses.

### Xerox Premium Digital Carbonless Paper

It takes an exceptional paper to create single or multi-part forms in color—on-demand. Xerox Premium Digital Carbonless is the only such paper guaranteed to run cleanly, reliably, and produce crisp text in the DocuColor 7000/8000. With its Capsule Control Coating and precision-cut edges, our carbonless paper makes it easy and economical to add colorful logos and highlights to invoices, contracts, receipts, or claim forms. Xerox Premium Digital Carbonless Paper makes it easy to design, create, and print customized forms on demand.



## Today's challenges. Tomorrow's growth. Be ready for both.

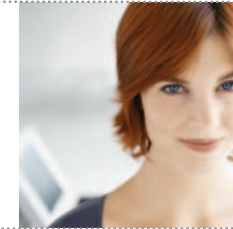
You feel the pressure every day—to control costs, boost productivity, be competitive, and of course, give your customers the print quality and value they demand.

To compete successfully, you need to find new ways to generate more profit from fewer resources. You need to produce more sophisticated variable information jobs in tighter time frames. And you need more than just a high-performance digital press, you also need a comprehensive, well-integrated digital workflow.

The new DocuColor 7000/8000 Digital Presses can help you meet those challenges and capitalize on the surging growth of digital.

Experts predict that the number of pages printed on digital presses per year is expected to nearly triple, from 3.4 billion in 2002 to 9.3 billion in 2007.\* The DocuColor 7000/8000 Digital Presses have the performance features and workflow flexibility you need to keep these anticipated productivity demands and your print standards in perfect harmony.

\*IT Strategies, November 2003



# Servers. Service. Support.

## The high notes of a great performance.

The DocuColor 7000/8000 Digital Presses give you a choice of three of the most popular networked color servers available today.

Each one combines outstanding color management with a user-friendly interface to yield superb digital color and a workflow that integrates smoothly into your printing environment. Specific features ensure that one of these servers is the ideal choice for your operation.

### Xerox DSP8000 Color Server.

The DSP8000 is an extremely fast, powerful, and easy-to-use color server. It combines Xerox's proven experience in monochrome printing with our vast color printing and on-demand digital production skills. Such built-in features as exception-page programming, job forwarding, and Print Manager make job management easier. The DSP8000 effortlessly handles all levels of variable information by combining efficient management of variable elements and data streams. You'll find the DSP8000 has all the flexibility and speed you need.

### EFI® EXP8000 Color Server.

The EXP8000 Color Server may well be the easiest way to get great color. EFI made sure that the EXP8000 has the new and enhanced features that have a direct impact on your productivity. Powerful processors efficiently RIP even the most complex jobs, producing variable data jobs quickly and easily. Extensive ColorWise® color management tools make it possible to produce consistently brilliant output regardless of the user's color management expertise.

### Creo® CXP8000 Color Server.

The CXP8000, built by Creo, an industry leader known for color quality, goes well beyond providing excellent color output. This color server combines color management tools that yield superb digital color with a workflow that integrates smoothly with the high-end digital color production environment. The CXP8000 Color Server also offers variable information solutions that provide the right amount of programming and processing power for virtually any situation.



## FreeFlow™: Workflow for The New Business of Printing™—and ideal for your DocuColor 7000/8000 Digital Press

Workflow is the process of managing jobs from creation through final output. Whether you're in a digital or offset environment, or in a combination of the two, you must go through the same basic processes. Your challenge is to get from one step to another in the quickest, most efficient way possible while still maintaining the highest quality and production levels.



From ordering with FreeFlow Web Services, to prepress automation with FreeFlow Process Manager, to managing jobs with FreeFlow Print Manager, the Xerox FreeFlow Digital Workflow Collection does it all. The Collection is a suite of integrated, standards-based, modular workflow components and "Optimized for FreeFlow" partner technologies specifically designed to streamline operations, improve productivity, and enhance performance on the DocuColor 7000/8000 Digital Presses.

*FreeFlow solutions and services, together with a Xerox digital color press, enable highly efficient, profitable short-run and variable information printing. They also support a wide range of high-value applications, including print-on-demand and Web-to-print; unified offset and digital printing; book printing; personalized marketing; cross media; 1-to-1 publishing; and transactional promotional communications.*



## Variable information makes communications personal. And powerful.

One exciting frontier that's sure to drive the color printing marketplace is variable information printing, VI for short.

Xerox has a long and successful history of providing solutions

for a highly efficient variable information workflow, and the

new DocuColor 7000/8000 Digital Presses are here to make the most of it.

Variable information is able to dramatically increase the impact, appeal, and retention of your documents. By adding variable information, documents suddenly become incredibly effective and memorable personal communications.

Numerous VI composition tools, such as Lytrod and XMPie, have been Optimized for FreeFlow through enablement of Xerox VIPP, simplifying the creation and accelerating the production of variable documents. The powerful solution of FreeFlow and the new DocuColor 7000/8000 Digital Presses will help you meet the challenges and increased business opportunities of variable information printing. Let's make beautiful music together.

# Features that move you.

## Benefits that sing.

The DocuColor 7000/8000 Digital Presses are the latest additions to a family of innovative Xerox color digital printing solutions that go back a dozen years. Built on the solid foundation of the DocuColor 6060 and a series of DocuColor 2000 Digital Presses, the new DocuColor 7000/8000 Digital Presses offer the ideal combination of speed, reliability, flexibility, image quality, and value.

**A Paper Feed Module**, featuring new technology enhancements to improve paper handling, is comprised of two 2,000-sheet trays, enabling you to run lightweight and heavyweight stocks from 16 lb. bond/45 lb. text to 110 lb. cover (60-300 g/m<sup>2</sup>). A secondary feed module can be added to extend paper capacities to a total of 8,000 sheets, allowing for jobs with up to four types of stocks.

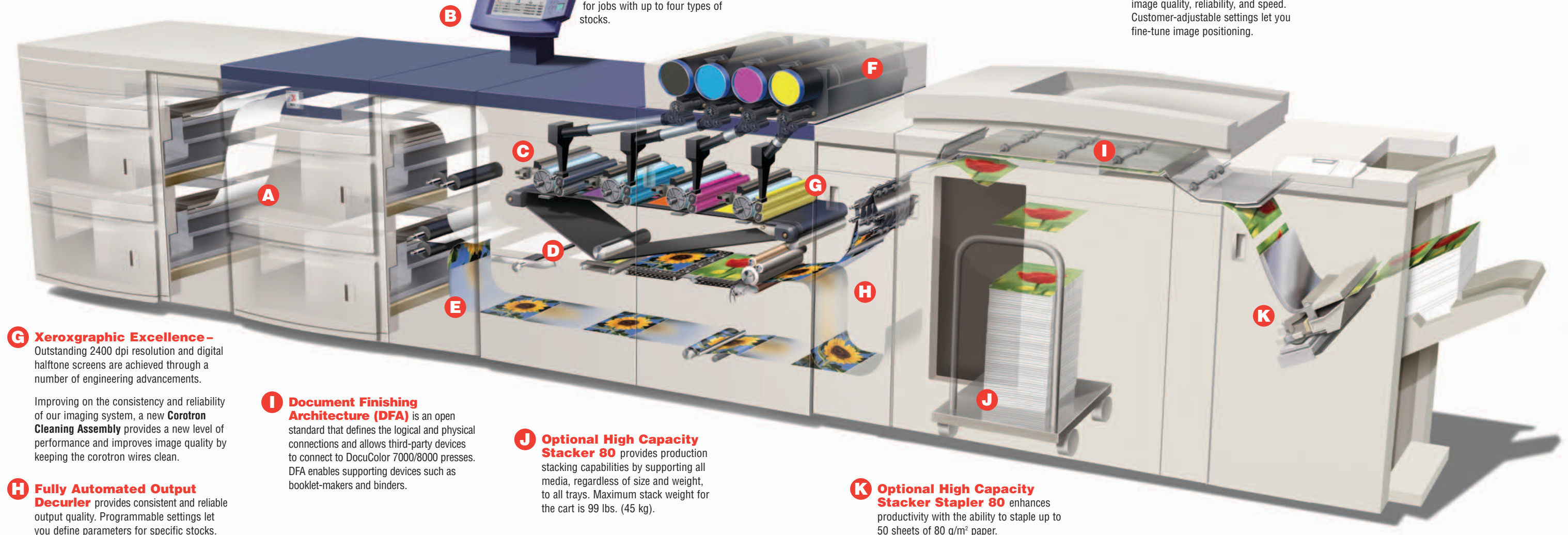
**B Custom Paper Setup**, enables you to create, store, and retrieve unique paper profiles based on characteristics of a paper that can be utilized over and over.

**D Customer Adjustable Alignment** makes registration a snap, with finite control over skew, perpendicularity, and lead edge adjustments.

**F Toner Load While Run** – Productivity remains high because you don't have to stop DocuColor 7000/8000 presses when loading toner. A reservoir holds enough to produce up to 5,000 prints while you load new toner cartridges.

**C New Gearless Motors** provide consistency in overall image quality.

**E Paper Path**, including the stainless-steel inversion and duplex paths, plays an important role in supporting benchmark image quality, reliability, and speed. Customer-adjustable settings let you fine-tune image positioning.



**G Xeroxgraphic Excellence** – Outstanding 2400 dpi resolution and digital halftone screens are achieved through a number of engineering advancements.

Improving on the consistency and reliability of our imaging system, a new **Corotron Cleaning Assembly** provides a new level of performance and improves image quality by keeping the corotron wires clean.

**H Fully Automated Output Decurler** provides consistent and reliable output quality. Programmable settings let you define parameters for specific stocks.

**I Document Finishing Architecture (DFA)** is an open standard that defines the logical and physical connections and allows third-party devices to connect to DocuColor 7000/8000 presses. DFA enables supporting devices such as booklet-makers and binders.

**J Optional High Capacity Stacker 80** provides production stacking capabilities by supporting all media, regardless of size and weight, to all trays. Maximum stack weight for the cart is 99 lbs. (45 kg).

**K Optional High Capacity Stacker Stapler 80** enhances productivity with the ability to staple up to 50 sheets of 80 g/m<sup>2</sup> paper.